

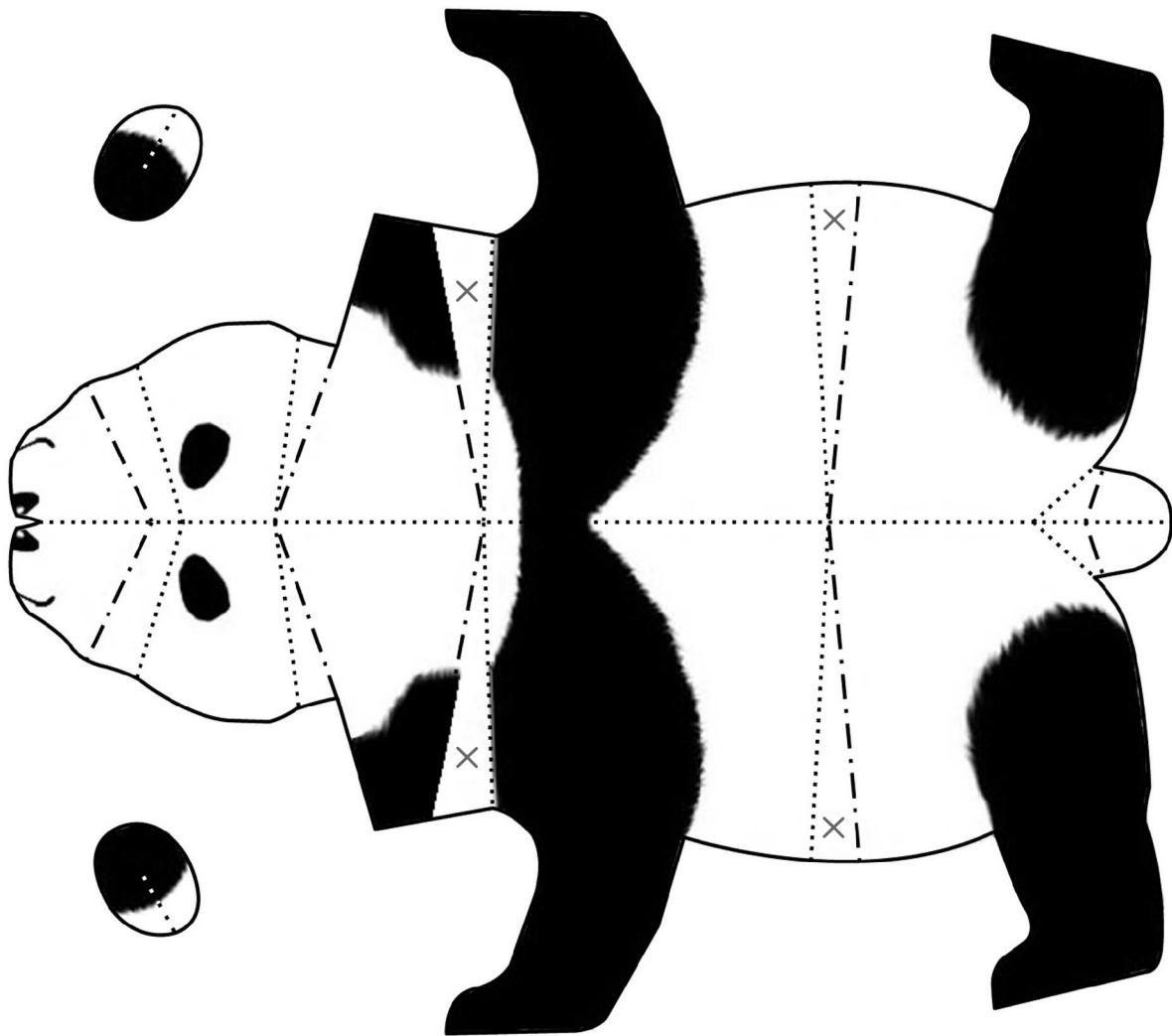
PAPER CRAFT

<https://creativepark.canon>

Giant Panda

Habitat: China

Remarks: Endangered species
Length approx. 120cm to 150cm (approx. 4 to 5 feet)



Enlarged view of head



《Assembly Instructions》

X mark
Paste down so that the fold does not open up.



Pinch.



Paste here.

Pinch the white parts of the ears to make the ears rounded and then paste.

- Scissors line
- - - Mountain fold
- - - Valley fold

PAPER CRAFT

<http://www.canon.com/c-park/en/>

African Elephant

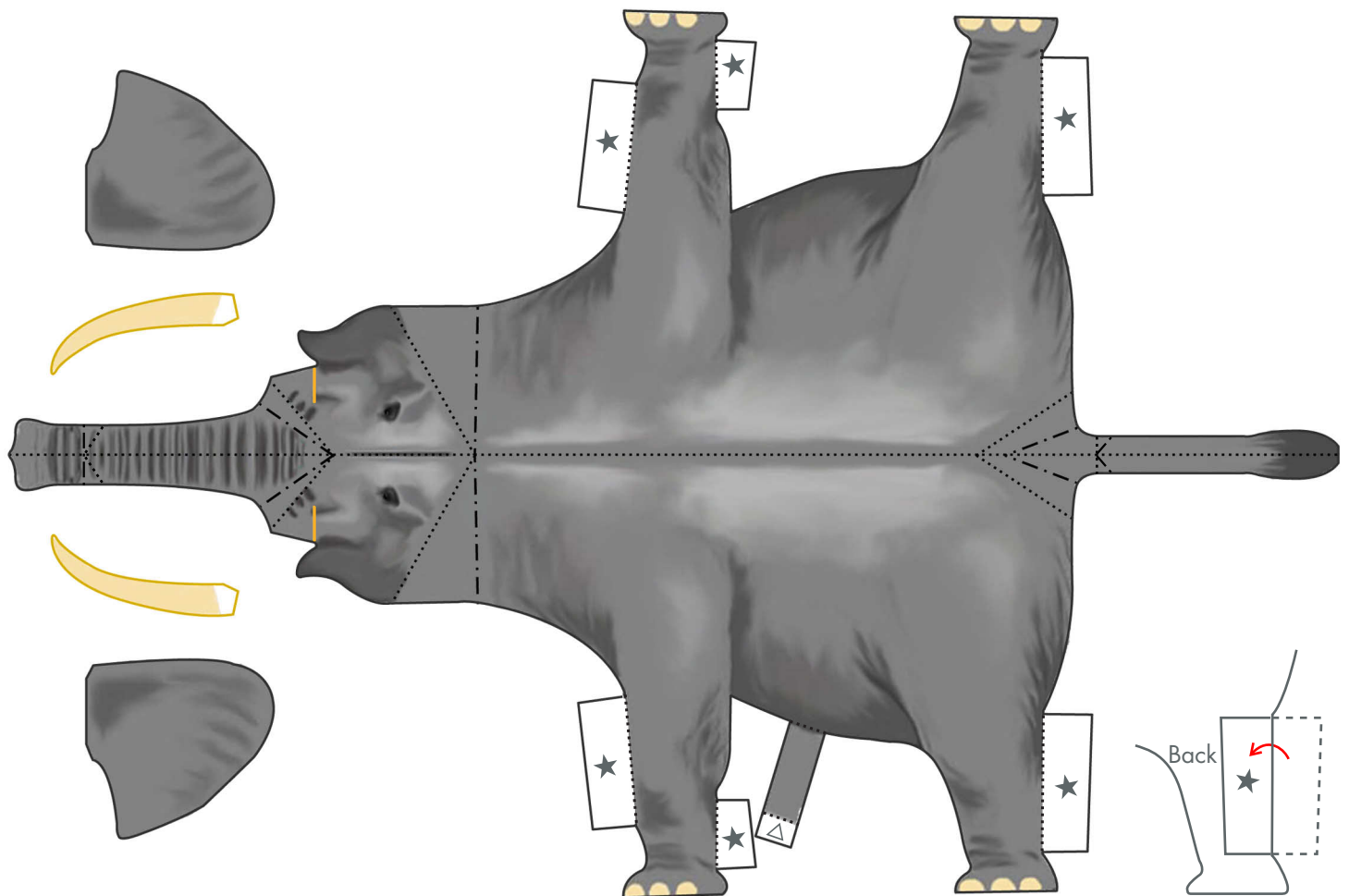
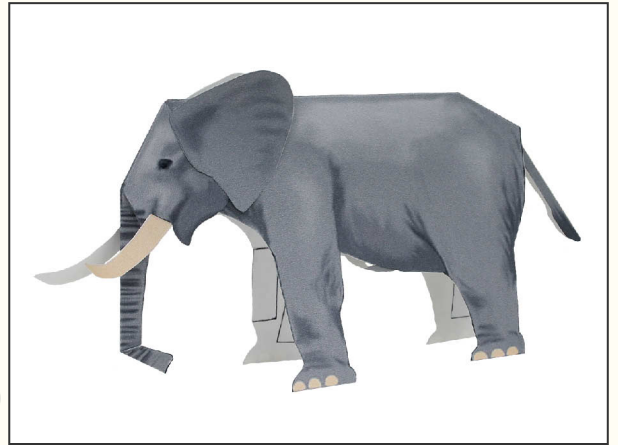
Habitat: African continent, south of the Sahara

Remarks: Length (incl. tail) approx. 6 to 7m (approx. 20 to 23 feet)

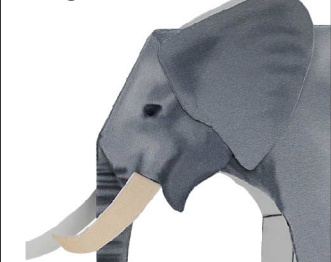
Height approx. 3 to 3.35m (approx. 10 to 12 feet)

Weight approx. 5,000 to 7,000kg (approx. 11,000 to 15,400lbs)

The world's largest land dwelling animal.



Enlarged view of head



Enlarged view of tail



《Assembly Instructions》

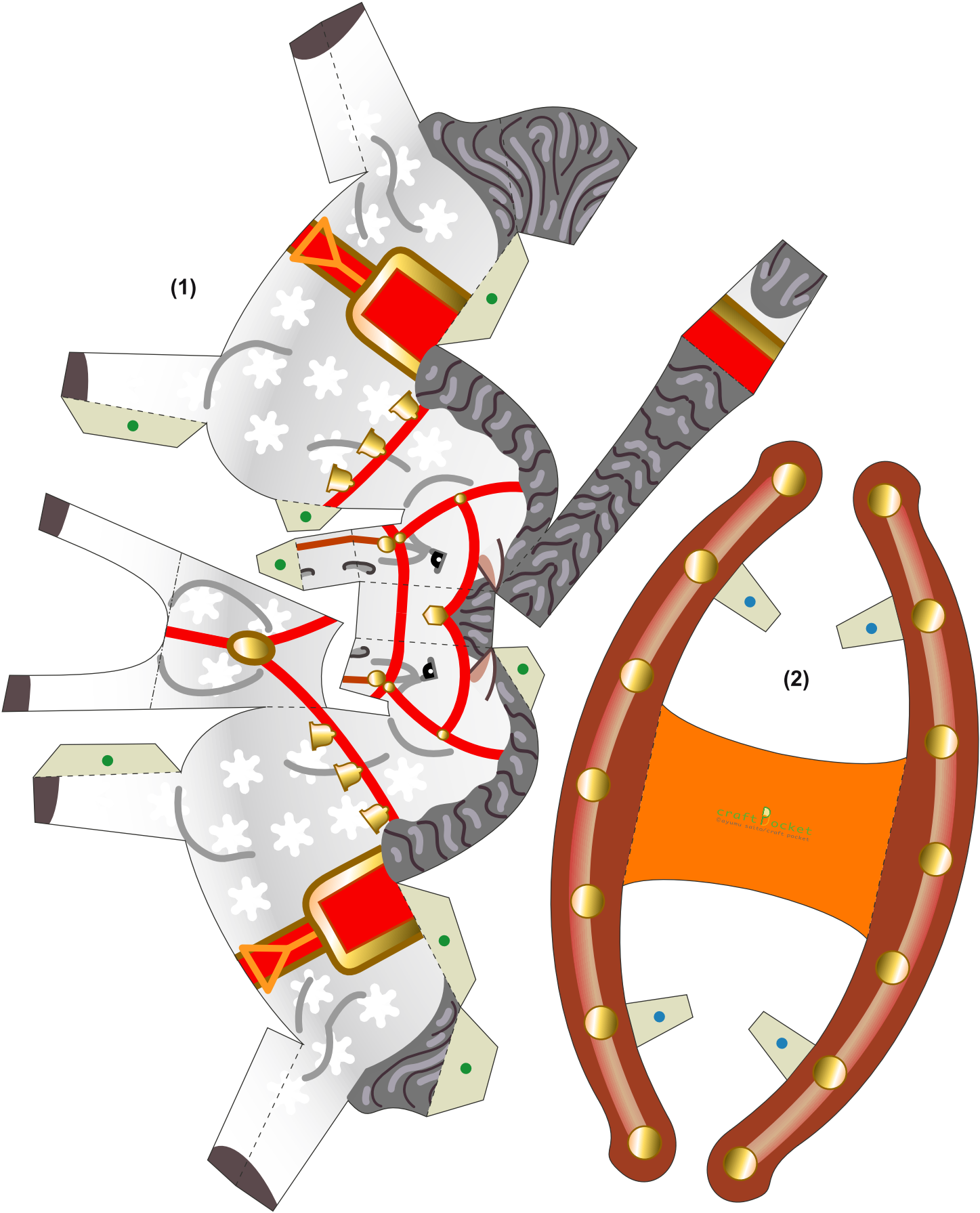
★ mark
Fold and paste on for extra strength.

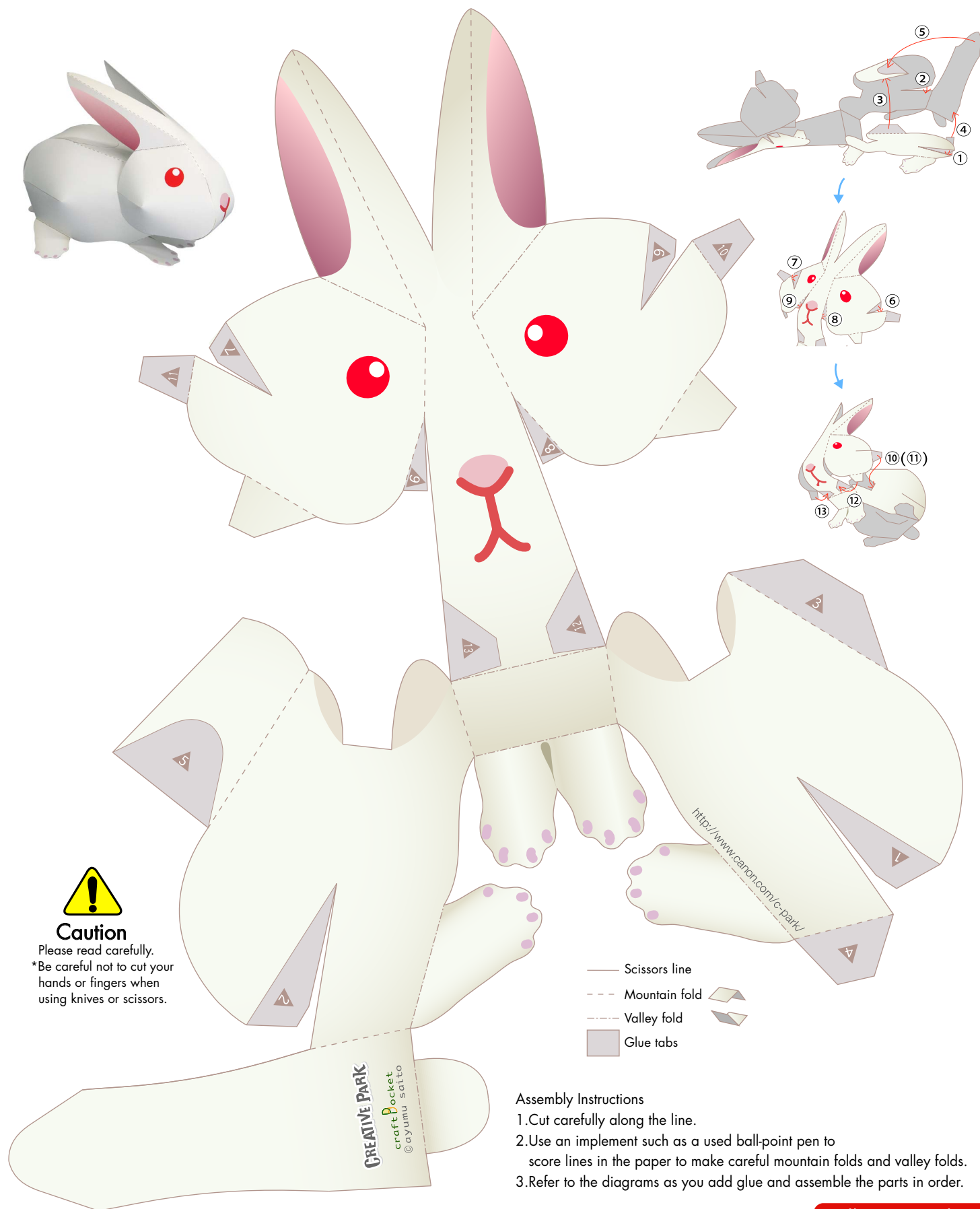
△ mark
Paste on to reverse side after completion.

Paste the tusks into the back of the cutaways.

- Scissors line
- Cut in line
- - - - Mountain fold
- . - . Valley fold







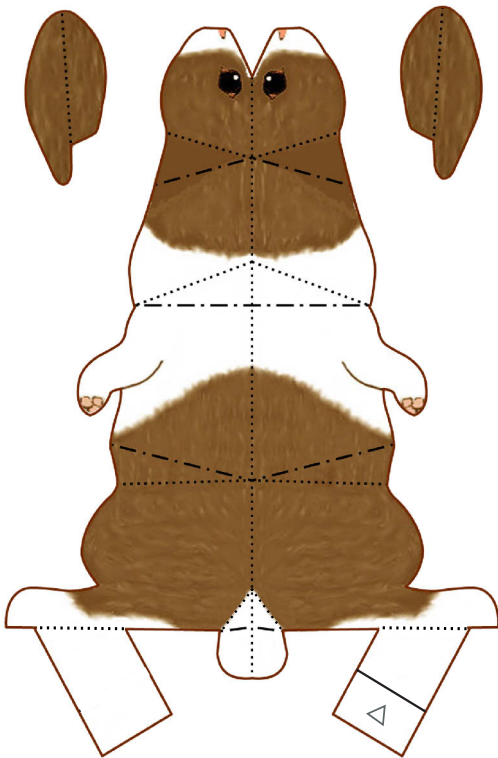
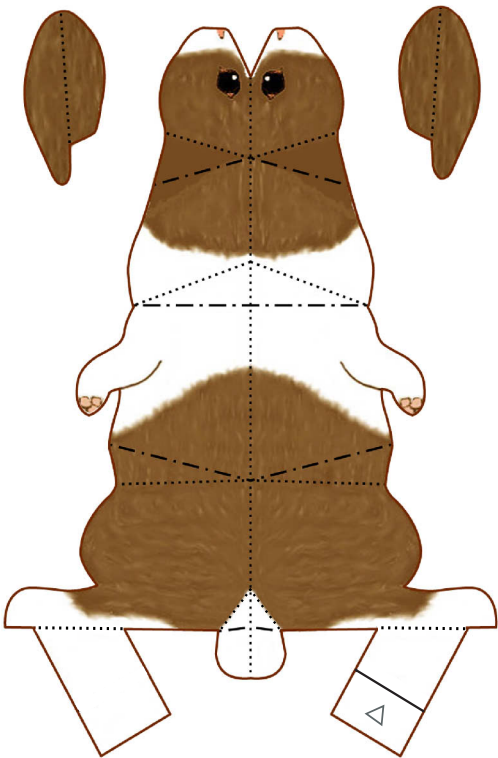
PAPER CRAFT

<http://www.canon.com/c-park/en/>

Rabbit

Habitat: Worldwide

Remarks: Very timid and cautious

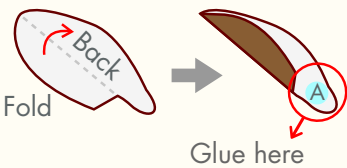


Enlarged view of head



《Assembly Instructions》

△ mark
Paste on to the band on the opposite side.



You can paste the ears on in whatever angle you like.

- Scissors line
- - - Mountain fold
- - - Valley fold





Caution

Please read carefully.
*Be careful not to cut your hands or fingers when using knives or scissors.



- Scissors line
- - - Mountain fold
- - - Valley fold
- Glue tabs

Assembly Instructions

1. Cut carefully along the line.
2. Use an implement such as a used ball-point pen to score lines in the paper to make careful mountain folds and valley folds.
3. Refer to the diagrams as you add glue and assemble the parts in order.